



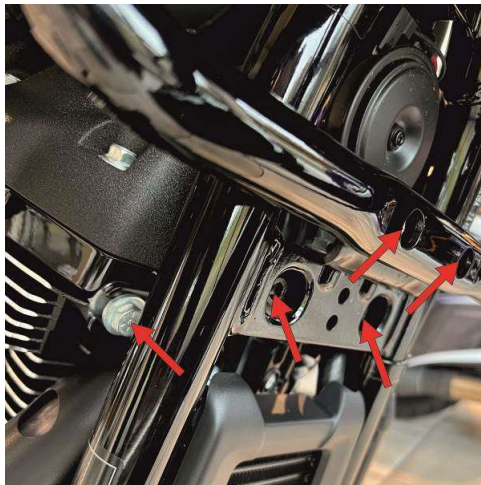
Installation Instructions

For M8 Softail Engine Guards K59514 and K59515

A FACTORY SERVICE MANUAL WILL BE HELPFUL IN PERFORMING THIS INSTALLATION. DO NOT ATTEMPT TO PERFORM THIS INSTALLATION IF YOU ARE NOT CONFIDENT IN YOUR ABILITY TO COMPLETE ALL OF THE STEPS IN THE PROCEDURE; CONSULT A TRAINED TECHNICIAN. IMPROPER INSTALLATION COULD RESULT IN SERIOUS INJURY OR DEATH.

NOTE: For models other than Low Rider ST FXLRST please disregard instructions or pointers pertaining to ST fairing.

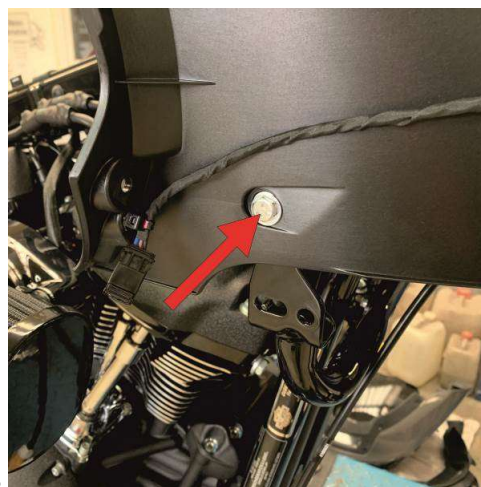
1. We suggest removing the fuel tank to avoid any accidents while working around the tank.
2. Remove mounting hardware from the stock foot controls on the left and right sides.
3. Remove the outer fairing.
4. Loosen the bolts indicated by arrows. See pictures #1, #2, and #3 below:



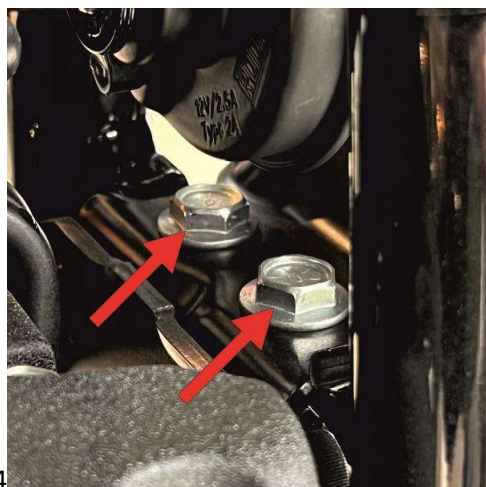
#1



#2



#3



#4

5. Remove the top engine mount bolts indicated by arrows in picture #4 next.
6. Push the "Kodlin Engine Guard Frame" between the stock engine bracket and frame then loosely install bolts previously removed. See picture #5.



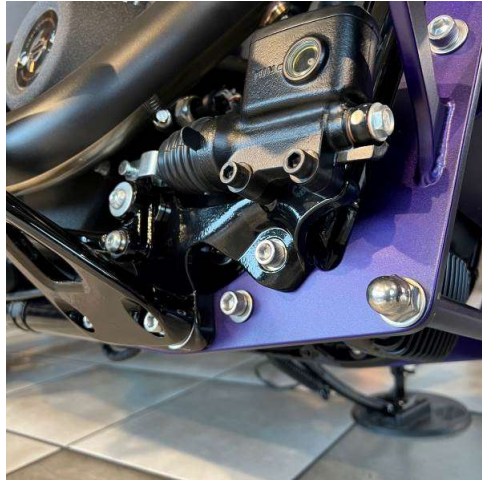
#5



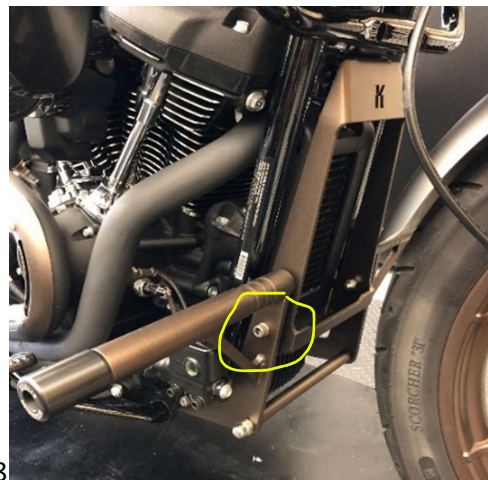
#6

7. Place the Kodlin Engine Guards left and right sides between the frame and foot controls. See pictures #6 and #7 below.

Warning: If you have already installed foot control spacers to accommodate exhaust or other accessories the provided hardware may not be long enough for proper thread engagement. Make sure you use bolts long enough for proper thread engagement otherwise threads may fail, and parts may become loose under stress.



#7



#8

8. Use the longer hardware provided as needed. Use medium strength thread locker on all hardware. Do not tighten any bolts until step #10.
9. Place the round tube between the left and right engine guard sides and secure with provided acorn nuts.
10. One black spacer will go between the main center section and each side. Secure with bolt and acorn nut. See picture #8.
11. Tighten all bolts and the 12mm threaded rod.
12. Reinstall the outer fairing per manufactures recommendations.

NOTE: No warranty coverage is provided by Kodlin that is due to improper installation or lack of maintenance. Periodic maintenance and inspection are required. It is the installer's responsibility to ensure that all the fasteners are tightened before operation of the motorcycle. We recommend following the Mfg.'s torque specifications provided by factory service manual.

For the latest install guides, video's, FAQ's. and Tech-Tip's scan QR code!



Revision Date: 12/18/2023

www.kodlinusa.com