

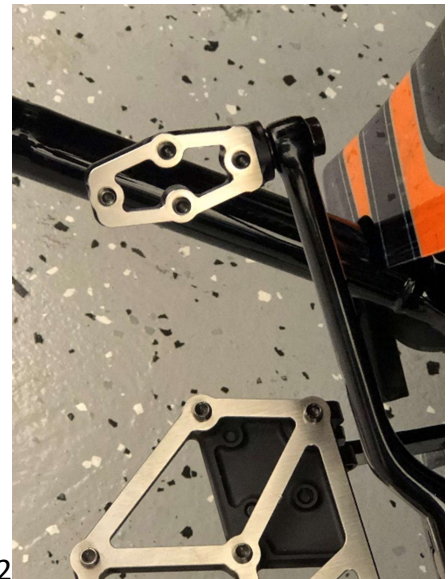


Installation Instructions for Kodlin NXL Shifter Peg - K73256

1. Remove existing toe/heel shifter peg.
2. Completely run shoulder bolt through shifter arm from back side. For a heel shifter the arm may need to be removed to facilitate this. See picture #1.
3. Using medium strength thread locker on bolt threads install bolt through washer then into shifter peg.
4. Align shifter peg as needed and tighten to 96-144 in/lbs. See picture #2



Picture 1



Picture 2

NOTE: No warranty coverage is provided by Kodlin that is due to improper installation or lack of maintenance. Periodic maintenance and inspection are required. It is the installer's responsibility to ensure that all the fasteners are tightened before the operation of the motorcycle. We recommend following the Mfg.'s torque specs.

For the latest install guides, videos, FAQ's. and Tech-Tip's scan QR code!



Revision Date: 2/3/2025

www.kodlinusa.com